

Pan Improvisation

Why Improvisation?

- essential for developing musicianship
- lacking in wider music curriculum

- 8:00 - Music Theory/Aural Skills
- 10:00 - Baroque Era Music History
- 12:00 - Symphonic Band
- 2:00 - Woodwind Methods
- 4:00 - Gen Ed Class



Technique

Ear Training
Theory

Improvisation

Reading

Why Improvisation?

- essential for developing musicianship
- lacking in wider music curriculum

- 8:00 - Music Theory/Aural Skills
- 10:00 - Baroque Era Music History
- 12:00 - Symphonic Band
- 2:00 - Woodwind Methods
- 4:00 - Gen Ed Class



- 8:00 - Music Theory/Aural Skills
- 10:00 - Baroque Era Music History
- 12:00 - Symphonic Band
- 2:00 - Woodwind Methods
- 4:00 - Gen Ed Class

Pan Improvisors

- soloists in early Steel Bands
- part of creative process for arrangers
- part of Steel Band performance (outside of Panorama)

Improv is scary!

- Steel Band can be a testing ground
- young musicians trying to improvise for the first time
- secondary instrument can be a positive

Let's Play

Basic Method:

- set up a vamp
- start improvising with only a few notes
- slowly expand melodic/rhythmic palette
- introduce harmonic concepts

Set up a vamp - harmonically simple

The image displays a musical score for a vamp in 4/4 time, featuring three parts: Seconds, Guitars, and Bass. The key signature is one flat (Bb) and the time signature is common time (C). The score is divided into four measures, each starting with a 7-measure rest.

Seconds: The melody consists of eighth notes. Measure 1: Bb2, Bb2. Measure 2: Bb2, Bb2. Measure 3: Bb2, Bb2. Measure 4: Bb2, Bb2, Bb2, Bb2, Bb2, Bb2, Bb2.

Guitars: The accompaniment consists of chords. Measure 1: Bb2, Bb2. Measure 2: Bb2, Bb2. Measure 3: Bb2, Bb2. Measure 4: Bb2, Bb2, Bb2, Bb2, Bb2, Bb2, Bb2.

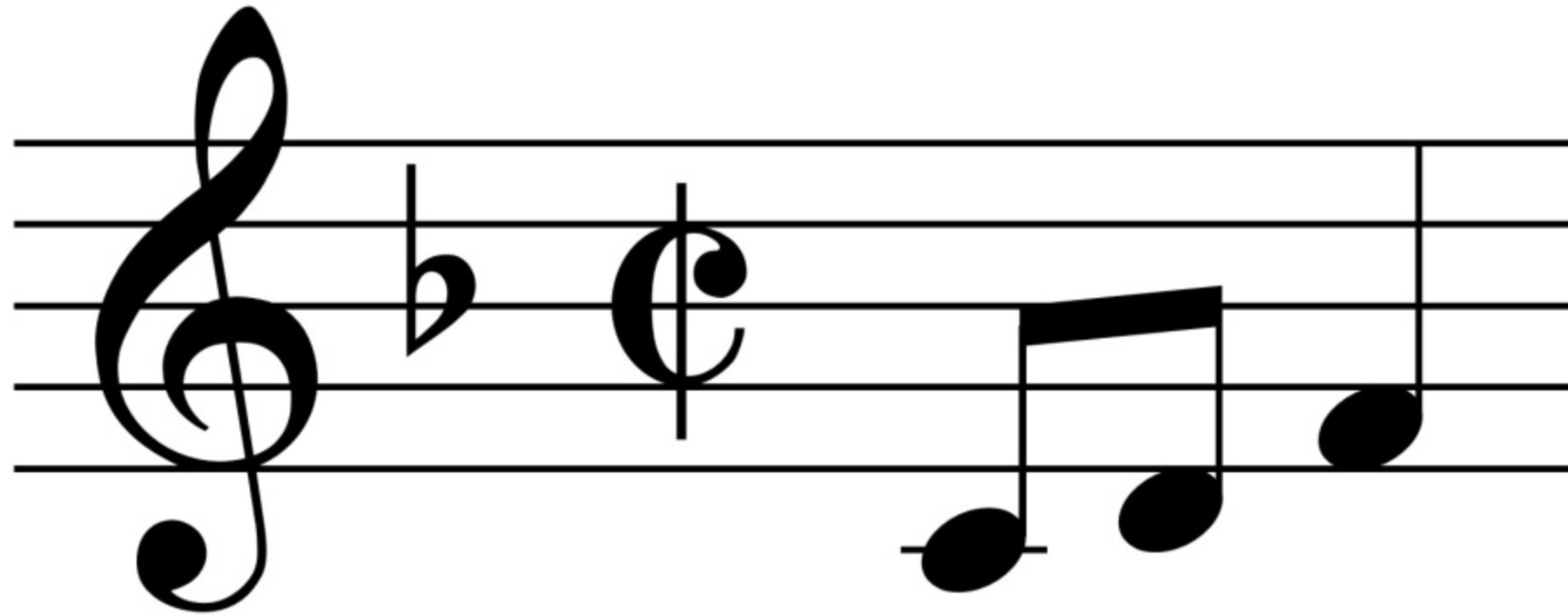
Bass: The bass line consists of quarter notes. Measure 1: Bb2, Bb2. Measure 2: Bb2, Bb2. Measure 3: Bb2, Bb2. Measure 4: Bb2, Bb2, Bb2, Bb2, Bb2, Bb2, Bb2.

Chord symbols are provided below the Guitars staff: **ii7** for the first measure, **V7** for the second measure, and **I** for the third measure. The fourth measure contains a sharp sign (#) above the staff, indicating a key change to B major.

Lord Kitchener - "Old Lady Walk a Mile and a Half"

3 pitches only:

- repeat after me
- repeat after you
- trading all at once
- trading individuals



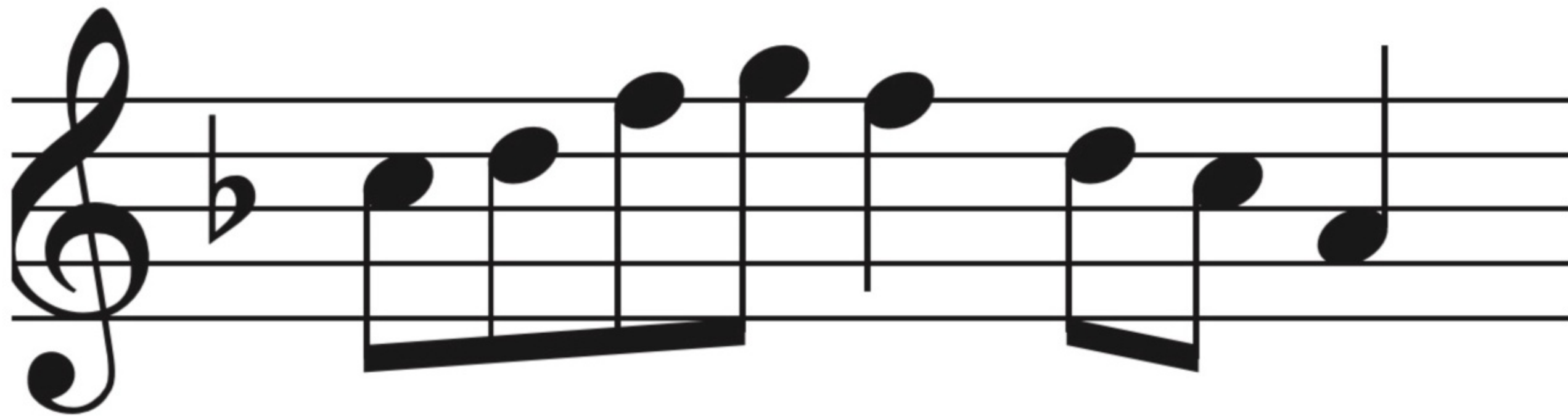
Practice a simple scale



F Major Pentatonic

practice different rhythmic patterns

Given melodic phrase



Given rhythmic phrase



Expand the palette

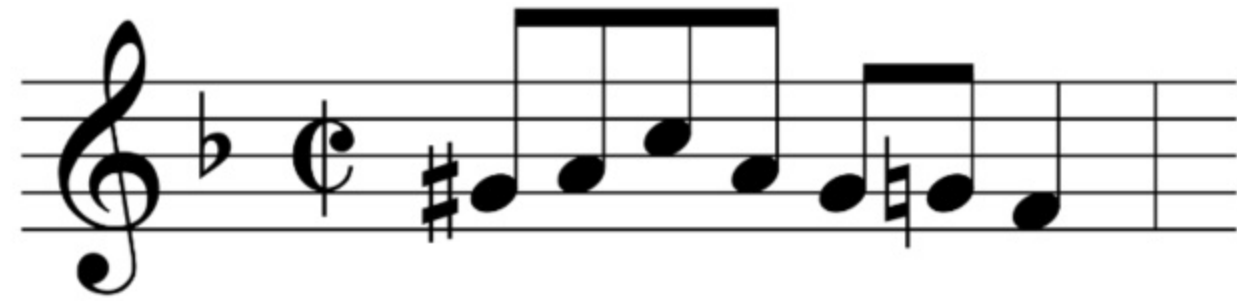


F Major Blues



F Major

Working with licks



More tunes that can include open vamps

"The Hammer" - David Rudder - IV - V - I - I

Major Pentatonic - Major Scale

"Trouble in Arima" - Lord Kitchener - I - I - ii7 - V7

Major Blues Scale - Chord tones

"Conscious Chutney" - Ras Shorty, arr. Teague - i - i - VII - VI V

Minor Pentatonic - Harmonic Minor

"Float" - Machel Montano - I - vi - bVII - IV

Major Pentatonic - Major Blues Scale

"Differentology" - Bunji Garlin - i - VII - IV - IV

Minor Pentatonic - Dorian

More Info:

- expanded article
- video lessons
- play along track

pwfitzgi@oakland.edu



Take this with you. Revisit anytime.

Missed something? Want to explore further?
Scan or click below to open this presentation.
Anytime, anywhere.

[View presentation](#)

